

SUPPORT

REMOTE SENSING

Remote sensing is used to improve the degradation of regulation which will occur at the load when the voltage drop in the connecting wires is appreciable. This is done by configuring the power supply for remote sensing. Using a pair of #20 AWG wires, connect terminal 2 of JS2 to the positive terminal of the load and connect terminal 1 of JS2 to the negative terminal of the load. Figure 1 and 2 illustrate standard output sensing and remote output sensing.



Caution: Configuring the power supply for remote sensing requires terminals 1 and 2 of JS2 to be connected to the load as illustrated in figure 2. Operating the power supply configured for remote sensing and without this connection can cause power supply failure.

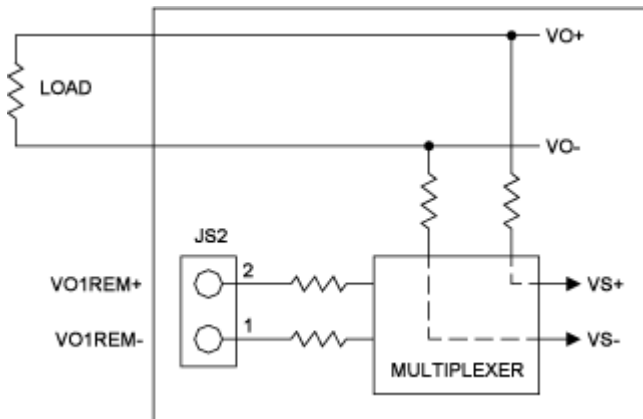


Figure 1. Standard Sensing

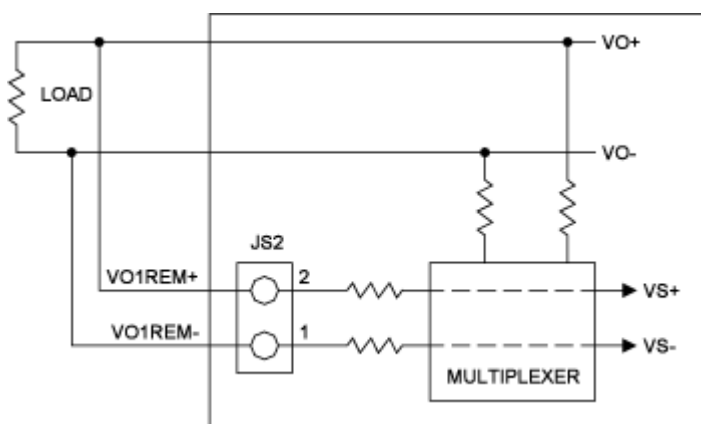


Figure 2. Remote Sensing